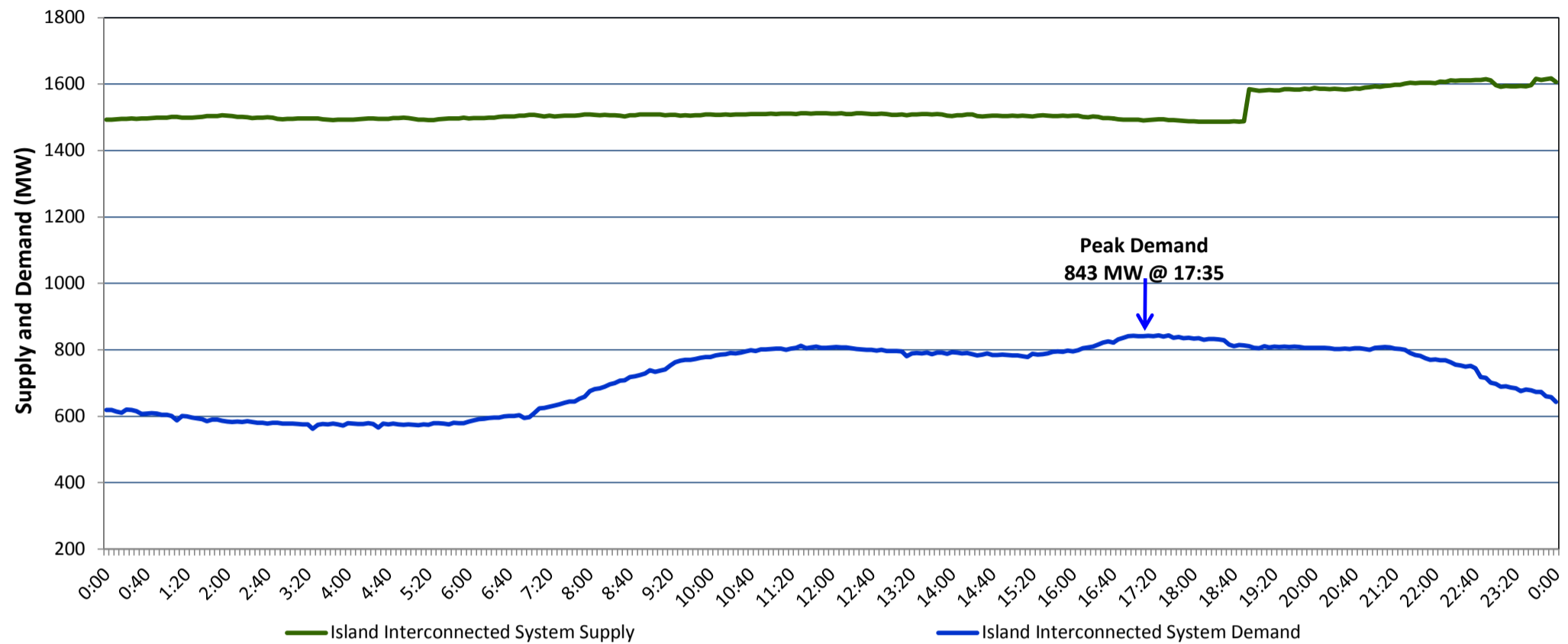


Newfoundland Labrador Hydro (NLH) Supply and Demand Status Report Filed Tuesday, July 04, 2017

Section 1 Island Interconnected System Supply and Demand Actual 24 Hour System Performance For Sunday, July 02, 2017



Supply Notes For July 02, 2017

1,2

- A As of 2003 hours, May 03, 2017, Bay d'Espoir Unit 3 unavailable due to planned outage (76.5 MW).
- B As of 1544 hours, May 19, 2017, Hawke's Bay Diesel Plant available at 2.5 MW (5 MW).
- C As of 1147 hours, May 31, 2017, Holyrood Unit 3 unavailable due to planned outage 147 MW (150 MW).
- D As of 1858 hours, June 22, 2017, Stephenville Gas Turbine available at 25 MW (50 MW).
- E As of 0938 hours, June 23, 2017, Holyrood Unit 1 unavailable due to planned outage 120 MW (170 MW).
- F **At 1851 hours, July 02, 2017, Holyrood Unit 2 available at 165 MW (170 MW).**

Section 2 Island Interconnected System Supply and Demand

Mon, Jul 03, 2017	Island System Outlook ³	Seven-Day Forecast	Temperature (°C)		Island System Daily Peak Demand (MW) Forecast
			Morning	Evening	
Available Island System Supply: ⁵	1,515 MW	Monday, July 03, 2017	16	17	795
NLH Generation: ⁴	1,185 MW	Tuesday, July 04, 2017	16	16	775
NLH Power Purchases: ⁶	130 MW	Wednesday, July 05, 2017	8	9	840
Other Island Generation:	200 MW	Thursday, July 06, 2017	15	18	795
Current St. John's Temperature:	16 °C	Friday, July 07, 2017	16	16	790
Current St. John's Windchill:	N/A °C	Saturday, July 08, 2017	14	18	760
7-Day Island Peak Demand Forecast:	840 MW	Sunday, July 09, 2017	18	17	765

Supply Notes For July 03, 2017

3

- G **At 0604 hours, July 03, 2017, Bay d'Espoir Unit 2 unavailable due to planned outage (76.5 MW).**

- Notes:
1. Generation outages for running and corrective maintenance are included. These are not unusual for power system operations. They generally do not impact customer supply. The power system operators schedule outages to system equipment whenever possible to coincide with periods when customer demands are low and sufficient supply reserves are available. However, from time to time equipment outages are necessary and reserves may be impacted.
 2. Due to the Island Interconnected System being isolated from the larger North American grid, when there is a sudden loss of large generating units some customer's load must be interrupted for short periods to bring generation output equal to customer demand. This automatic action of power system protection, referred to as under frequency load shedding, is necessary to ensure the integrity and reliability of system equipment. Under frequency events typically occur 5 to 8 times per year on the Island Interconnected System and the resultant customer load interruptions are generally less than 30 minutes.
 3. As of 0800 Hours.
 4. Gross output including station service at Holyrood (24.5 MW) and improved NLH hydraulic output due to water levels (35 MW).
 5. Gross output from all Island sources (including Note 4).
 6. NLH Power Purchases include: CBPP Co-Gen, Nalcor Exploits, Rattle Brook, Star Lake, Vale capacity assistance (when applicable), and Wind Generation.

Section 3 Island Peak Demand Information Previous Day Actual Peak and Current Day Forecast Peak

Sun, Jul 02, 2017	Actual Island Peak Demand ⁸	17:35	843 MW
Mon, Jul 03, 2017	Forecast Island Peak Demand		795 MW

- Notes: 8. Island Demand is supplied by NLH generation and purchases, plus generation owned and operated by Newfoundland Power and Corner Brook Pulp & Paper (Deer Lake Power, DLP).